

OttoMenu 3.0 Documentation

Function: provide quick access to programs and utilities under Win3. This is a menu only system - no file management facilities are provided.

Installation: copy *om.exe* to any directory you wish. Launch *om.exe* from the program manager, the file manager, or include it in the run= or load= line of your *win.ini* file.

Using Ottomenu: OM comes with 10 icons across the top of the display window, a second row of 5 icons underneath, a center box of 20 configurable program items, and 1 to 4 page icons along the bottom of the window. The icon bar looks like this:



Use the icons to access various utility functions and Windows programs. From left to right the top row functions are:

1. Program manager
2. File manager
3. Clipboard
4. Control panel
5. Print manager
6. PIF editor
7. Notepad
8. Windows Paint
9. Sysedit
10. Windows Setup

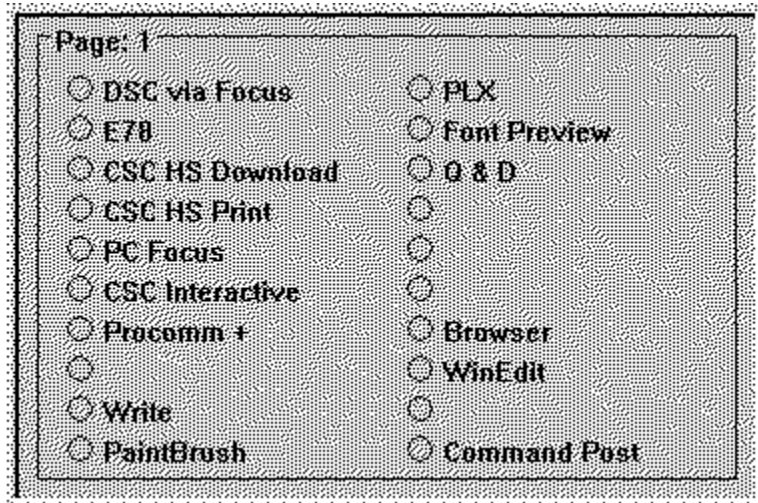
The bottom functions are:

1. DOS prompt
2. See free space on all drives
3. Refresh memory display
4. Exit OttoMenu
5. Exit Windows!

To activate a function or utility, click the icon.

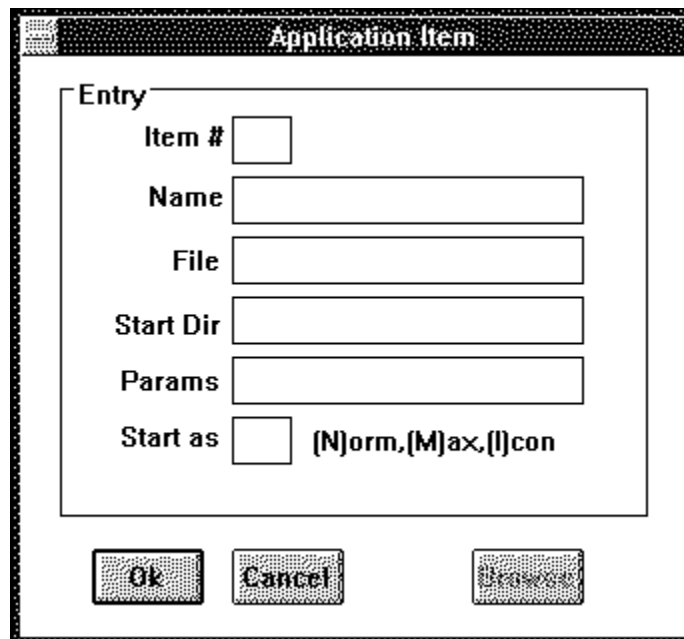
The sculpted box on the right gives the free Global , User segment , and GDI segment memory. You can update this display by clicking the chip icon. It is also recomputed whenever you click a page icon along the bottom of the window.

The middle of the window contains 20 radio buttons which launch programs or batch files. You will need to configure these items to suit your own needs. The page icons at the bottom let you access additional groups of 20 items. You can have 1 to 4 pages, for a total of 80 possible program items. Here's a sample page



Configuring OttoMenu

To set up program items, you use the 'Menu Maintenance...' option on the System Control menu of the OM window. You'll see a dialog box with six fields for entry. You can make 20 entries on each "page", and use up to 4 pages. The Ottomenu default is to display 4 pages, which accommodates item numbers 1 to 80.



Enter an item number in the first box, and TAB to the next field. If an entry already exists for that item number, the remaining fields will fill with the existing data. In the

Name field, enter the text you want displayed next to the radio button. Brevity is needed - no more than 20 characters. In *File* and *Start Dir* enter respectively the filename of the program and the starting directory. If the .exe file is in the path, you can omit the path, otherwise give the complete pathname in the *File* box. The *Start Dir* is optional - Ottomenu will change to the *Start Dir* just before launching the program if you supply one. In *Params* enter any parameters you wish to pass to the program such as a filename or command switch. These depend upon the particular application you are using. The last entry, *Start As*, lets you request that the application start normal, maximized, or iconized. Whether this actually happens depends upon the application - it can choose to honor the request or not!

Browsing for applications - Once you have entered an item number, the Browse button becomes active. If you click it, a file dialog box is put up that lets you navigate the disk and locate the program file you wish to use. After you find it and select it, choose OK, and the full pathname will be entered into the *File* field (as well as a *Name* entry based on the filename). You'll probably want to change the *Name* field, but this is a quick way to find an application without mistyping the path.

Other options: If you make an entry for Item Number = 0, this item will be used when you click the C:> icon in the icon bar. This lets you substitute a different command interpreter for your DOS windows, if you wish, and also to specify the starting directory. You can edit the OM.INI file in the Windows directory and make an entry

MaxPages=n

and specify n=1 to 4, for example MaxPages=4 . This determines how many page icons are displayed on the bottom, and thus the maximum number of program items you can access through Ottomenu. Using 4 pages gets you more items, but the down side is a longer load time for Ottomenu , as reading OM.INI seems to run fairly slowly. Other OM.INI options are

AutoMin=1

to have Ottomenu self-iconize after launching a program item.

Path Considerations: Although Ottomenu lets you specify a full pathname for the program file and a different starting directory, your application may not support that arrangement. Typically, programs that use link libraries need to be either in the DOS path (before Windows starts) or start in the directory that contains the link libraries. To accommodate this, change the path or make sure that the *Start Dir* entry is set to the directory containing the program and link libraries.

Run Command: the System Menu contains a Run... option that lets you launch programs on an ad-hoc basis. You'll get a file dialog box which you can use to locate the program file. Select the program, click OK, and wait for the program to initialize.

Limitations/Notes: The class libraries used by OM are currently incompatible with the "Launch" feature of Norton Desktop for Windows. If you wish to use both, you would need to disable that feature of NDW. Ottomenu assumes a standard Windows installation where the Microsoft supplied utility programs are included in the DOS path - if this is not true, OM will fail to find a corresponding program for the icons in the top row. OM is written in Turbo Pascal for Windows - earlier verions were in C and Openscript. Source code is included for those interested. The free User and GDI segment memory are computed using a technique suggested by Paul Yao in *MSJ*. The results do not agree exactly with other measures, but are useful as a relative gauge of remaining resources.

Copyright: Ottomenu is a copyrighted work of Doug Overmyer, San Pedro Graphics. He reserves all rights to the work, but grants to individuals a license to use it freely outside of a commercial or institutional setting. You can pass on copies of this program so long as you include this document file and the original program file.

Disclaimer: Ottomenu comes with no warranties. You use it entirely at your own risk. It may or may not be suitable for your setup and needs.

Comments, Problems: Please drop me a note on Compuserve at 71021,2535.

Author: Doug Overmyer. 12/30/91